

# LABEL

## Thermal Printer

Healthcare

Retail

Logistics

Manufacturing

- Low noise, high print speed up to 152mm/s
- Innovative and small design, user friendly operation
- With large memory (64MB SDRAM) and can preload more bitmaps
- Support BPLA, BPLZ, BPLE 3 different programming languages



With peeler



Open structure design



Easy paper loading



With LCD



 **Newland**  
SCANNING MADE SIMPLE



# NLP-D10

## LABEL thermal printer

### SPECIFICATIONS

Print	Print method	Direct thermal	
	Resolution	203DPI	
	Print width	56mm(Max.)	
	Print speed	152mm/s(Max.)	
	Memory	SDRAM: 64MB, Flash:4MB, can be extend to 8MB	
	Sensors	Top cover position position, TPH overheating protection, Mark sensor, Paper existence	
	Drivers	Windows drivers(Win2000/XP/2003/VISTA/2008/Win7/Win8), Linux	
	Interface	Optional: Serial, parallel, USB, USB+Serial, Ethernet, WLAN	
Button,LED,LCD	1 button, 1 LED, 1 LCD(optional)		
Barcodes Fonts Graphics	Barcodes	1D: CODE39, UPCA, UPCE, Interleaved 2 of 5, CODE128, EAN13, EAN8, HBIC (code 39 with verify symbol), Codabar, industry/interleaved 2 of 5, storage and transportation code, UPC2, UPC5, CODE93, Postnet 25 (China), UCC/EAN CODE, matrix 25 CODE, POSTNET CODE etc. 2D: PDF417, MAXICODE, QRCODE, etc.	
	Fonts	Normal used single-byte fonts: FONT0 ~ FONT8, 6 kinds of ASD smooth fonts, 8 kinds of Courier fonts;User-defined fonts: User can define font and download it to FLASH or SDRAM	
	Character modification	Rotate (0°,90°,180°,270°), enlarge (1-8x)	
	Graphics printing	Plain bit-image in binary system, HEX, PCX, BMP and IMG files can be downloaded to FLASH or RAM.	
Paper	Paper type: Continuous paper, Label paper, Marked paper, etc.		
	Paper width: 62mm (Max.)	Paper roll OD: 127mm (Max.)	
	Paper roll ID: 12.7mm/25.4mm	Paper out: Tear-off, peel-off	
Power supply	Input: 100~240V AC,50~60Hz	Output: 24V DC, 2.5A	
Environment	Operation conditions: 5~45°C, 20%~90%RH(40°C)		Storage conditions: -40~60°C, 20%~93% RH(40°C)
Physics Spec.	Dimensions: 221(L)×169(H)×125(W)mm		Weight: Approx. 1.1Kg
Standards	CCC, CE, UL, FCC		



# NLP-D30

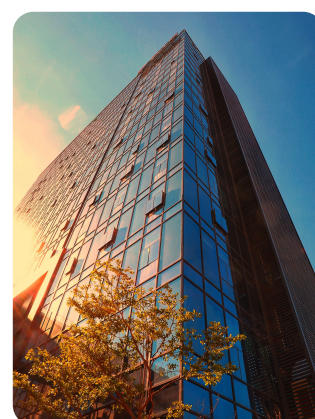
## LABEL thermal printer

### SPECIFICATIONS

Print	Print method	Direct thermal
	Resolution	203DPI
	Print width	104mm(Max.)
	Print speed	152mm/s(Max.)
	Memory	SDRAM: 64MB, Flash:4MB, can be extend to 8MB
	Sensors	Top cover position position, TPH overheating protection, Mark sensor, Paper existence
	Drivers	Windows drivers(Win2000/XP/2003/VISTA/2008/Win7/Win8), Linux
	Interface	Standard: USB(On-board) Optional: Serial, Parallel, Ethernet, WLAN(Wi-Fi)
Barcodes Fonts Graphics	Button,LED,LCD	1 button, 1 LED, 1 LCD(optional)
	Barcodes	1D: CODE39, UPCA, UPCE, Interleaved 2 of 5, CODE128, EAN13, EAN8, HBIC (code 39 with verify symbol), Codabar, industry/interleaved 2 of 5, storage and transportation code, UPC2, UPC5, CODE93, Postnet 25 (China), UCC/EAN CODE, matrix 25 CODE, POSTNET CODE etc. 2D: PDF417, MAXICODE, QRCODE, etc.
	Fonts	Normal used single-byte fonts: FONT0 ~ FONT8, 6 kinds of ASD smooth fonts, 8 kinds of Courier fonts;User-defined fonts: User can define font and download it to FLASH or SDRAM
	Character modification	Rotate (0°,90°,180°,270°), enlarge (1-8x)
Paper	Graphics printing	Plain bit-image in binary system, HEX, PCX, BMP and IMG files can be downloaded to FLASH or RAM.
	Paper type: Continuous paper, Label paper, Marked paper, etc.	
	Paper width: 120mm (Max.)	Paper roll OD: 127mm (Max.)
Power supply	Paper roll ID: 12.7mm/25.4mm	Paper out: Tear-off, peel-off
Environment	Input: 100~240V AC,50~60Hz	Output: 24V DC, 2.5A
Physics Spec.	Operation conditions: 5~45°C, 20%~90%RH(40°C)	Storage conditions: -40~60°C, 20%~93% RH(40°C)
Standards	Dimensions: 210(L)×167(H)×172(W)mm	Weight: Approx. 1.6Kg
	CCC, CE, UL, FCC	

### About Newland

- One of the leading companies in Auto-ID industry
- Over 20 years R&D experiences on barcode scanning technology
- Exclusive **UIMG**® scanning technology
- Inventor of barcode decoding chips
- The most comprehensive scanning portfolio, from 1D to 2D, from corded to cordless, from paper label to screen barcode & DPM (Direct Part Mark)
- Time to the market OEM & customized scanning solutions
- Direct technical support & professional services



**Newland Auto-ID Tech. Co., Ltd.**  
 Add: No.1 Rujiang West Rd., Mawei,  
 Fuzhou, Fujian 350001, China  
 Tel: +86-591-83979500  
 Email: info@nlscan.com  
 Web: www.newlandaidc.com

**Newland North America Inc.**  
 Add: 46559 Fremont Blvd.,  
 Fremont, CA 94538, USA  
 Tel: +1 510 490 3888  
 Email: info@nlscan.com  
 Web: www.newlandamerica.com